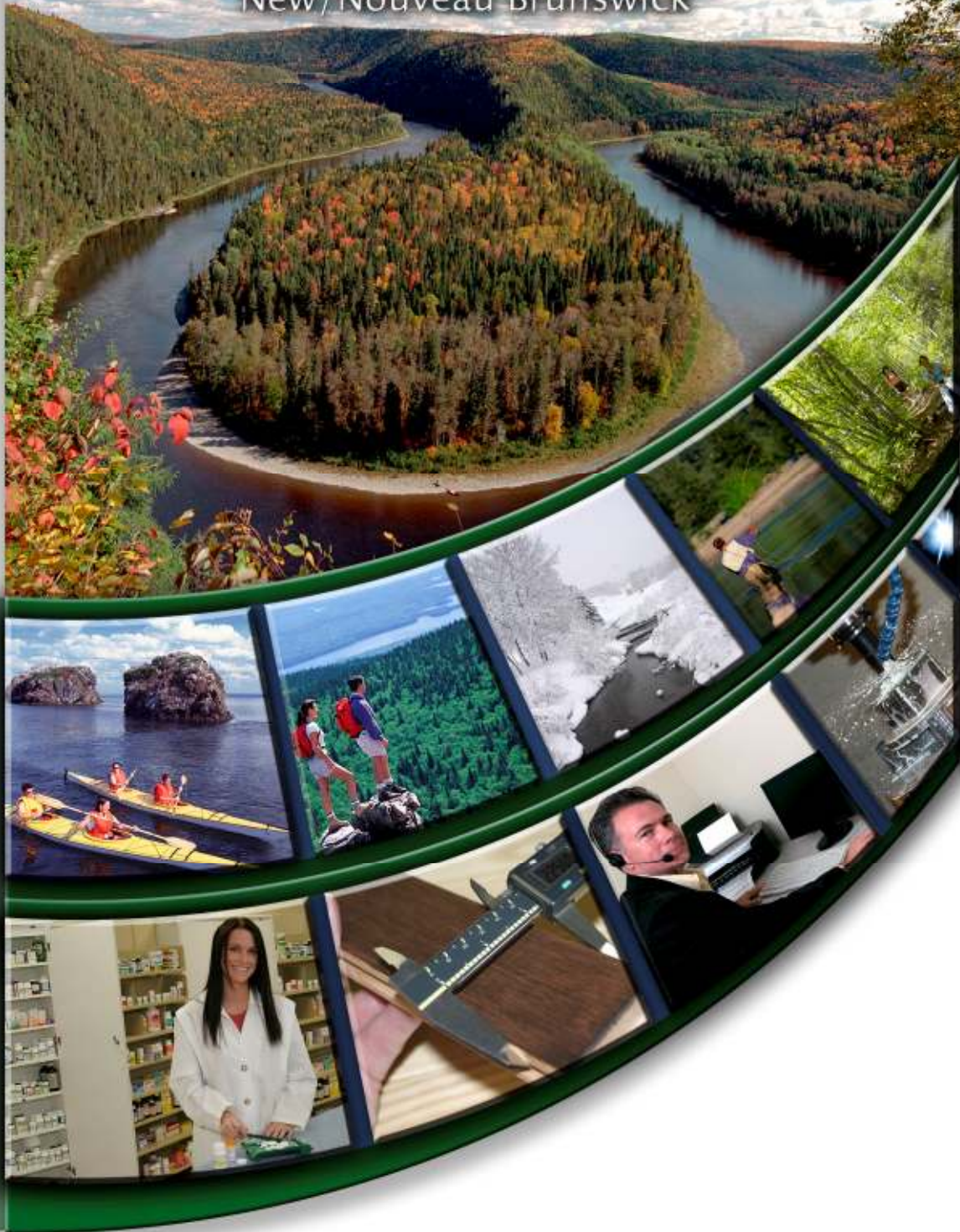


Être, vivre et faire affaires au  
**RESTIGOUCHE**  
Be, Live & Do Business Here

New/Nouveau Brunswick



 **Enterprise Restigouche / Entreprise Restigouche**

*Restigouche Socio-Economic Profile  
2011 Edition*

## Take advantage of everything Restigouche has to offer!



Enterprise Restigouche hopes to persuade you that it is economically feasible and socially appealing to live and do business in Restigouche.

The Restigouche Socio-Economic Profile is merely a snap shot of our beautiful region. The information contained within this document offers an interesting look at Restigouche.

*Enterprise Restigouche*

*Your first stop for information, advice and assistance!*

 **Enterprise Restigouche**

**Canada** 

New  Nouveau  
**Brunswick**  
C A N A D A

---

## **FIRST STOP FOR BUSINESS ADVICE!**

---

Enterprise Restigouche is your first stop for the development of your business ideas & projects.

Dedicated to economic development in our region, Enterprise Restigouche and its qualified personnel can enlighten you on government financial assistance programs that are the best suited to your needs. This is but one of the services we offer, free of charge, with absolute confidentiality and in both official languages.

**Whether you are thinking of starting or expanding your business,  
Enterprise Restigouche is your first stop for information, advice and assistance.**

# ***Enterprise Restigouche***

---



**YOUR FIRST STOP**  
**for business information,**  
**programs and services !**

### **EXECUTIVE DIRECTOR**

Ms. Betty-Ann Mercier, Ec.D.

97 Roseberry Street  
P.O. Box 825  
Campbellton, NB  
E3N 3H3

**Telephone:** (506) 789-4939

**E-mail:** [info@ent-restigouche.ca](mailto:info@ent-restigouche.ca)

**Fax:**

(506) 789-4933

**Website:**

[www.restigouche.ca](http://www.restigouche.ca)

# TABLE OF CONTENTS

	PAGE
<b>RESTIGOUCHE</b>	
ENCHANTING SCENERY .....	1
RICH CULTURAL HERITAGE .....	1
<b>OUR PEOPLE</b>	
SKILLED, BILINGUAL WORKFORCE IN RESTIGOUCHE .....	2
QUALITY EDUCATION IN RESTIGOUCHE .....	3
<b>ECONOMY</b>	
SOLID ECONOMIC BASE.....	4
SECTORS OF EXCELLENCE .....	4
A DIRECT ACCESS TO THE WORLD.....	5 - 6
POTENTIAL FOR ECONOMIC GROWTH IN RESTIGOUCHE .....	7
<b>QUALITY OF LIFE</b>	
AFFORDABLE HOUSING IN RESTIGOUCHE.....	8
THE SERVICES .....	9
ASSURED QUALITY OF LIFE IN RESTIGOUCHE .....	10 -13
TOURISM.....	11-13
<b>PROFESSIONAL SERVICE</b>	
SERVING ENTREPRENEURS .....	14
A CALL... IT'S SO SIMPLE.....	15



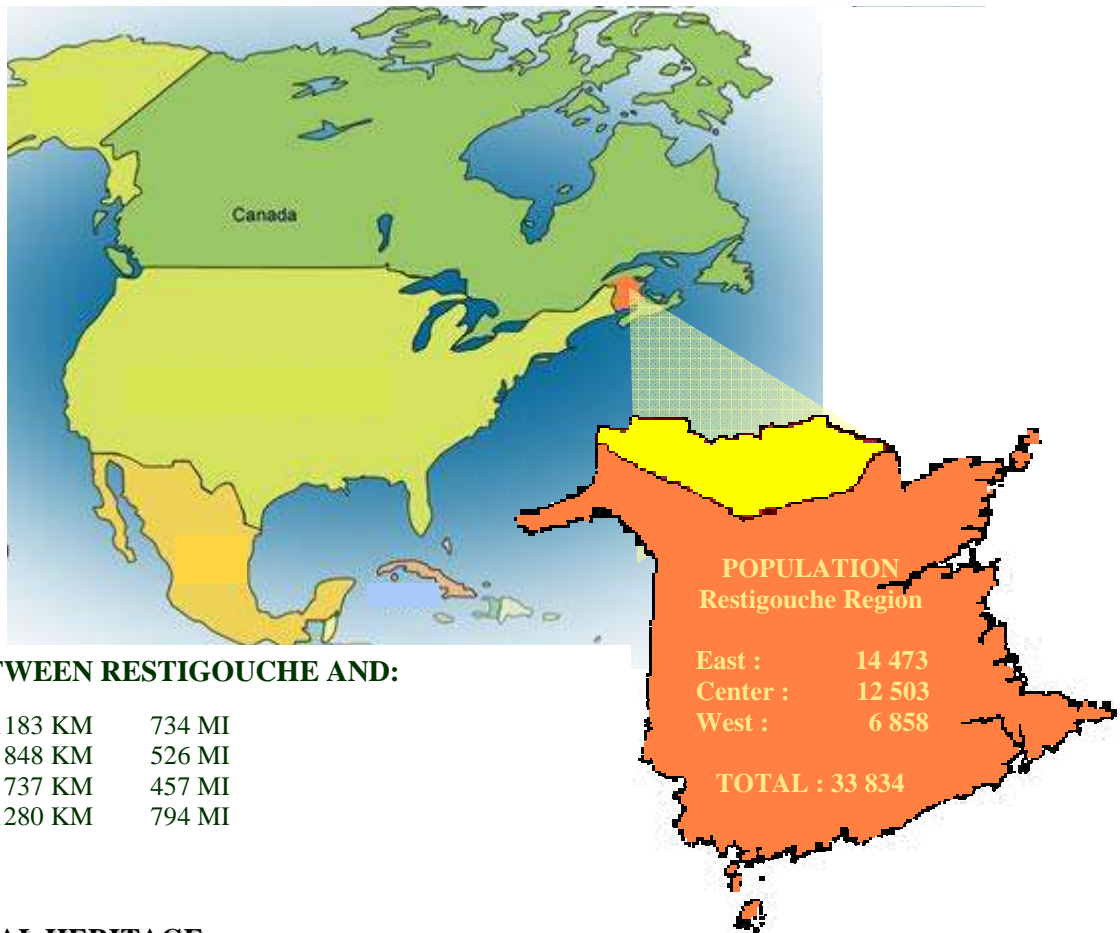
# RESTIGOUCHE !

## ENCHANTING SCENERY

Surrounded by the natural beauty of the Appalachian Mountains, Restigouche is known for its warmth and hospitality as well as for the multitude of cultural activities it has to offer.

Restigouche county is the most northern of New Brunswick's counties and also the most picturesque in eastern Canada.

- Stretching over an area of 8 577 square km
- Spanning over 150 km from Belledune to Saint-Quentin
- 9 incorporated municipalities
- 21 Local Service Districts
- 1 First Nation



## RICH CULTURAL HERITAGE

The unique culture of Restigouche comes from a rich mix of Acadians, Scottish, English, Irish and Mi'gmaq descendants. The region also boasts major cultural attractions including:

- Restigouche River, a Canadian Heritage River
- Bay of Chaleur, one of the most Beautiful Bays in the World
- The "Battle of the Ristigouche" National Historic Site of Canada
- Various Museums and Art Galleries
- The Miguasha Fossil Park

## SKILLED, BILINGUAL WORKFORCE IN RESTIGOUCHE !

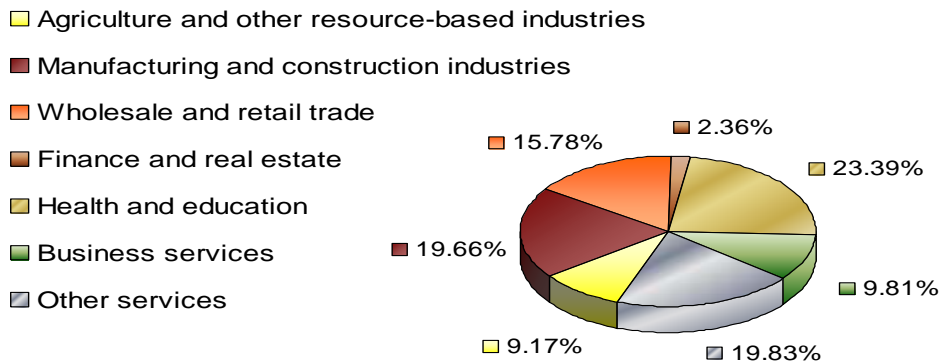
### LABOUR FORCE:

The region's work force has long been known for its work ethics and its enthusiasm. The efforts to diversify the economic base that were put forth in the last few years have yielded human capital in the manufacturing sector, namely, textile, machining, agriculture, electricity, communications, etc.

Boasting one of the highest bilingual rates in Canada, more than fifty percent of residents are fully bilingual. Restigouche is a perfect fit for companies seeking to establish French, English, or bilingual operations.

With competitive labour and resource costs, Restigouche is an ideal location for businesses looking to diversify their operations and gain a global competitive advantage.

### LABOUR FORCE PER INDUSTRY IN RESTIGOUCHE



Source: Statistics Canada, 2006 Census

## Demography of Restigouche

<b>Population</b>	<b>33 834</b>
<b>Active Population 15 +</b>	<b>15840</b>
<b>Employed</b>	<b>13 245</b>
<b>Unemployment Rate</b>	<b>16.4%</b>
<b>Employment Rate</b>	<b>47.2%</b>
<b>Bilingualism</b>	<b>52.3%</b>

Source: Statistics Canada, Census 2006

POPULATION OF RESTIGOUCHE		
Municipality		Population
Addington	Parish	2 727
Atholville	Village	1 317
Balmoral	Village	1 706
Balmoral	Parish	619
Belledune	Village	1 711
Campbellton	City	7 384
Charlo	Village	1 376
Colborne	Parish	234
Dalhousie	Town	3 676
Dalhousie	Parish	2 323
Durham	Parish	1 303
Eel River Bar	Reserve	357
Eel River Crossing	Village	1 168
Eldon	Parish	779
Grimmer	Parish	1 105
Kedgwick	Village	1 146
Saint-Quentin	Town	2 250
Saint-Quentin	Parish	1 578
Tide Head	Village	1 075
<b>TOTAL</b>		<b>33 834</b>

Source: Statistics Canada 2006

# QUALITY EDUCATION IN RESTIGOUCHE !

## A BILINGUAL, PUBLIC NETWORK

Serving Canada's only officially bilingual province, New Brunswick's education system offers students the opportunity to learn in both official languages. Students may also enrol in one of the three approved French Second Language Programs. Restigouche county is commendably administered by a well-organized bilingual network. In September 2010, the francophone district no. 5 (Restigouche/Chaleur), catered to 1919 students, throughout 9 schools in Restigouche and District 3 catered to 921 students in 4 schools in West Restigouche. On the anglophone front, district no. 15 (Restigouche/Chaleur), 1,505 students were in attendance in 7 schools in Restigouche.

## POST-SECONDARY EDUCATION

The programs offered by the **Community College** cover many aspects of training. CCNB-Campbellton focuses its efforts in the fields of health, community services, clerical work as well as secondary wood manufacturing.

The College offers numerous services to the community. Programs such as academic studies, literacy, second language training, the study and certification of trades as well as management training are available.

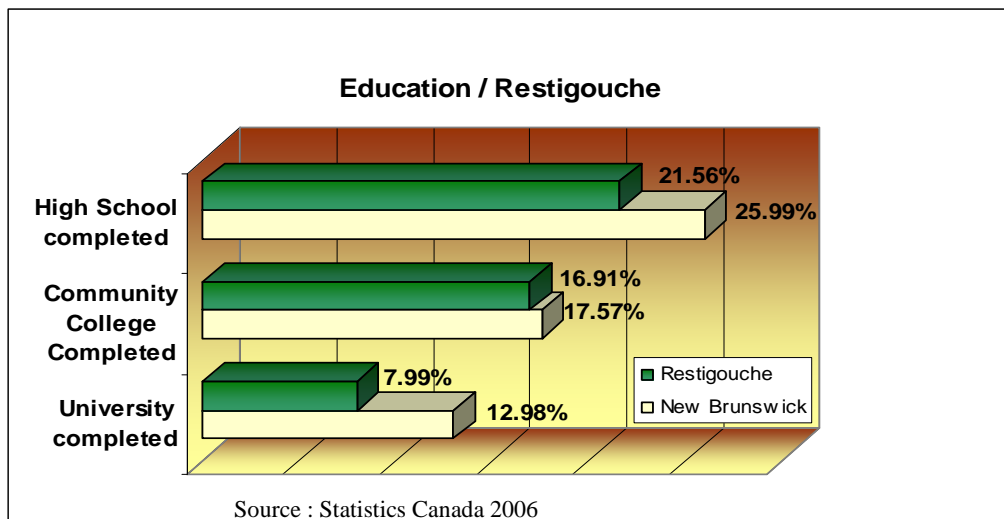
All programs combine theoretical as well as practical aspects. Many programs also offer training periods within the work force that allow students to obtain work experience in their prospective fields. The College also offers training on a contractual basis through custom made programs to meet the needs of employers.

The Community College also houses the **Woodworking Center of Excellence**. Opened in Campbellton, in 1996, the Center specializes in high quality training in secondary wood manufacturing.

This highly specialized training is geared towards not only traditional techniques but also the use of state of the art technologies. The Centre has more than 50 skilled graduates per year. Their knowledge of this technology will enable students to endeavour in the field of value added wood. They have also recently added an Innovation and Technology Transfer in order to further spark diversification and value added wood projects.

Post secondary institutions such as the *Université de Moncton*, as well as the *University of New Brunswick* and *Mount Allison University*, offer satellite courses in the region for people wanting to pursue a university education.

Graduates in Restigouche (per year)	
High School	419
Campbellton Community College	267
Woodworking Center of Excellence	30
Source : Enterprise Restigouche 2011 / <a href="http://www.gnb.ca">http://www.gnb.ca</a>	



## SOLID ECONOMIC BASE IN RESTIGOUCHE !

### ECONOMIC BASE:

The forestry sector has long been the backbone of Restigouche county's economy especially if we consider the whole industry, including:

- Forestry
- Transformation of the primary resource
- The pulp and paper industry
- As well as derived industries

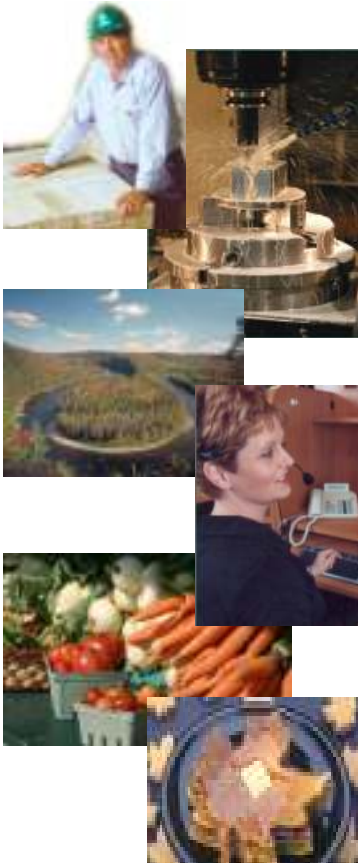
The forestry sector's influences as well as the initiatives of local entrepreneurs have contributed to the creation of many businesses in the service sector.

The economic activity of the region is concentrated in the tertiary sector. This concurs with the activity of the rest of the province. However, it should be noted that the Western side of the county has relatively strong activity in the primary sector.

Health-care, manufacturing and retail represent the areas that employ the most human capital.

## SECTORS OF EXCELLENCE

*The key to success will be to emphasize those economic sectors that offer RESTIGOUCHE the best competitive advantages on a world-wide scale. These sectors offer the greatest potential for the expansion of existing businesses, the creation of new businesses and, by extension, the creation of new jobs.*



### **WOOD PROCESSING: From our core expertise to value added!**

Wood processing has long been the economic base and key industry of the Restigouche region. The region is currently home to world-class companies in this sector. Restigouche will continue to draw on this historic expertise to drive economic growth.

### **METAL PROCESSING/FABRICATION: From ingenuity to innovation!**

Often former service providers to wood processing operators, companies in the metal processing sector are enjoying strong growth thanks to the development of new ways to transform metals into innovative products.

### **TOURISM: A world class destination for outdoor activities!**

The Restigouche region boasts a unique cultural heritage as well as outstanding, all-season natural beauty. The region's warmth and hospitality were showcased nation-wide during the 2003 Canada Winter Games.

### **SERVICES : The Service Centre "par" excellence!**

One significant asset the Restigouche region has is the bilingualism of its labour force. Knowledge of Canada's two official languages is a strategic advantage for the region and should be promoted to stimulate job creation in the service sector.

### **AGRI-FOOD: 100% Restigouche!**

The agricultural sector, especially in the west of the region, is a significant component of the Restigouche economy. The region's maple industry accounts for over 70% of provincial production. We will seek for new ways of tapping the growing demand for local, healthy and organic products in order to increase employment in the food-processing sector will be explored.

## A DIRECT ACCESS TO THE WORLD !

Thanks to its geographical location, its infrastructures as well as the quality of services, the population and the businesses of Restigouche have access to a multitude of possibilities to export and communicate with the world.

### Sea

The Dalhousie port is situated at the western extremity of the Bay of Chaleur, at the mouth of the Restigouche river (latitude 48°07'30"N, longitude 66°21'90"O, marine chart no.4426).

The Dalhousie port is composed of two wharves with the advantage of being opened year round. It is accessible by a channel with a width of 80 meters and a depth of 9,1 meters.

The East naval terminal is a modern wharf which was primarily utilized for exporting news stock products. The wharf has a width of 340 meters with a depth of 9,7 meters. Right next to it lies a storage hangar with an area of 10 370 m<sup>2</sup>.

The West naval terminal wharf has a length of 335 meters and a maintained depth of 10,3 meters. This installation is primarily used for importing petroleum and coal products.

Services available include fresh water, restocking, minor repairs, unloading, fueling, harbor master and dock keeper. The west terminal also offers railroad services.

Also located in proximity to the area is the Port of Belledune, which is situated in near the mouth of the St. Lawrence River on the south shore of the Bay of Chaleur.

### Air

The Charlo airport is situated at the edge of Route 11 and is approximately 11 km Southeast of Dalhousie. It serves an area stretching over a radius of 90 km and presently caters mainly to private aircraft medivac.

The aerial terminal also offers many services, such as: flight information, parking for vehicles, landing and maintenance services, airplane parking, fire service and a maintenance garage.

### Train

Campbellton is linked to Mont-Joli by a line administered by Quebec railways. VIA Rail is responsible for transporting passengers between Halifax-Campbellton-Montreal and the rest of the country.

### Roads

The region has an adequate highway system. The prime artery for this network is Route 11 which allows travel from Campbellton to other large centers to the south of the province, while going through Bathurst and Miramichi. The major secondary routes allowing access to this artery are Route 17 which joins Campbellton to the West of the county (Kedgwick and Saint-Quentin) also, Route 134 which runs along the Bay of Chaleur to the Eastern extremity of the county (Belledune).

To reach the Gaspé Peninsula, (Route 132) from Route 134, one must cross the J.C. Van Horne Interprovincial Bridge that links Campbellton and "Pointe-à-la-Croix". Restigouche is the entrance door into the Gaspé markets.

Maintenance of the roads is under the responsibility of the N.B. Department of Transportation.



## . . . A DIRECT ACCESS TO THE WORLD !

### **Postal services and delivery**

Canada Post operates offices in all incorporated municipalities in Restigouche.

Many businesses also ensure local, regional, provincial and national delivery of merchandise and/or packages.

### **Telecommunications**

New Brunswick is renowned internationally for its innovation in telecommunications. Restigouche county is well served by Aliant, which ensures primarily the installation services, prompt repairs, advertising, consulting and sale of telephone accessories.

Restigouche businesses benefit from their access to the world wide web and can also take advantage of numerous services for all their telecommunication needs.

Three customer service centers are located in Restigouche and employs approximately 180 people; SNC Lavalin ProFac Inc., Service New Brunswick Teleservices, the New Brunswick Tourism Communication Center and the College Admissions Services.

Furthermore, many community access centers allow citizens to browse the internet, easily and affordably.

### **Media**

Three weekly newspapers originate in our region. The Campbellton Tribune is published in English and covers the Campbellton and Dalhousie areas. The Campbellton Tribune also publishes “L’Étoile du Restigouche”, a French publication. “L’Aviron” is published in French and covers the territories of Restigouche; “L’Acadie Nouvelle” (French), Telegraph Journal, Times & Transcript and The Daily Gleaner are all published in New Brunswick and are available in Restigouche. Many newspapers published outside the province are also available in the region.

Campbellton/Dalhousie is served by a commercial radio station (CKNB, 950 AM), which broadcasts mainly in English. Two community based radio stations broadcast in French, CFJU 90,1 FM (Kedgwick/Saint-Quentin) and CIMS 103,9 and 96,7 FM. Restigouche listeners can also tune into National or other NB or Gaspé stations.

The region has many television stations. Cable television is also available everywhere through Roger’s Cable. This service allows people to receive over 40 Canadian and American channels.



## POTENTIAL FOR ECONOMIC GROWTH IN RESTIGOUCHE !

All the municipalities in Restigouche have space reserved for industrial and/or commercial development.

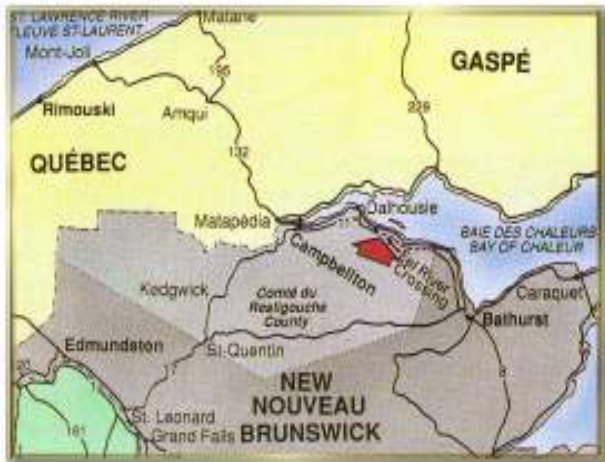
There are four industrial areas in Restigouche to accommodate, in an appropriate fashion, present and future users.



Based directly off Route 11, this individual park is within the boundaries of the Village of Eel River Crossing. The park is within 2 kilometres of the Charlo airport and within 9 kilometres of the Port of Dalhousie. It also offers a variety of useful services to its occupants. Its area hovers around 400 acres, and is zoned to accommodate light manufacturing businesses. The Restigouche Industrial Park is owned and managed by Enterprise Restigouche.

Sale prices per acre are flexible, (with or without service) and negotiable, taking into account the features of the lot and its position.

Restigouche Industrial Park - <http://www.ercvillage.com/fr/parc-industriel>



Along the Restigouche River, the Atholville Industrial Park is in the general proximity of AVCell operations.

The principal characteristic of this park is its industrial mall. Owned by the Village of Atholville, this mall is composed of two buildings with an overall area of 26 000 square meters (85 000 square feet). The main building, with a ceiling height of 4 meters (12 feet), offers 17 000 square meters (55 000 square feet) of floor area. The other building has an 8 meter (25 feet) ceiling.

Atholville Industrial Park- <http://www.atholville.net/fr-parc-mail.html>



Off the Route 11 turn-off, in Campbellton, this park presently caters to three businesses. Very visible, this park is well situated in order to facilitate the transportation of primary resources and finished products.

The Campbellton Industrial Park has a 30.1-acre area. Lots with services such as plentiful water, sewers with access to the City water treatment plant and also three-phase electrical supply are available in this park.

Contact the City of Campbellton for further information 506.789.2700

### Balmoral Economic Development Area

Constructed off Route 388 between Charlo and Balmoral, this 330-acre area welcomed its first cedar transformation mill in the fall of 1999.

A few kilometres away from access to Route 11, and the South East, this economic development area offers interesting advantages for different types of businesses. The municipality of Balmoral operates this area.

Balmoral Economic Development Area- <http://www.balmoralnb.com/dev.asp>

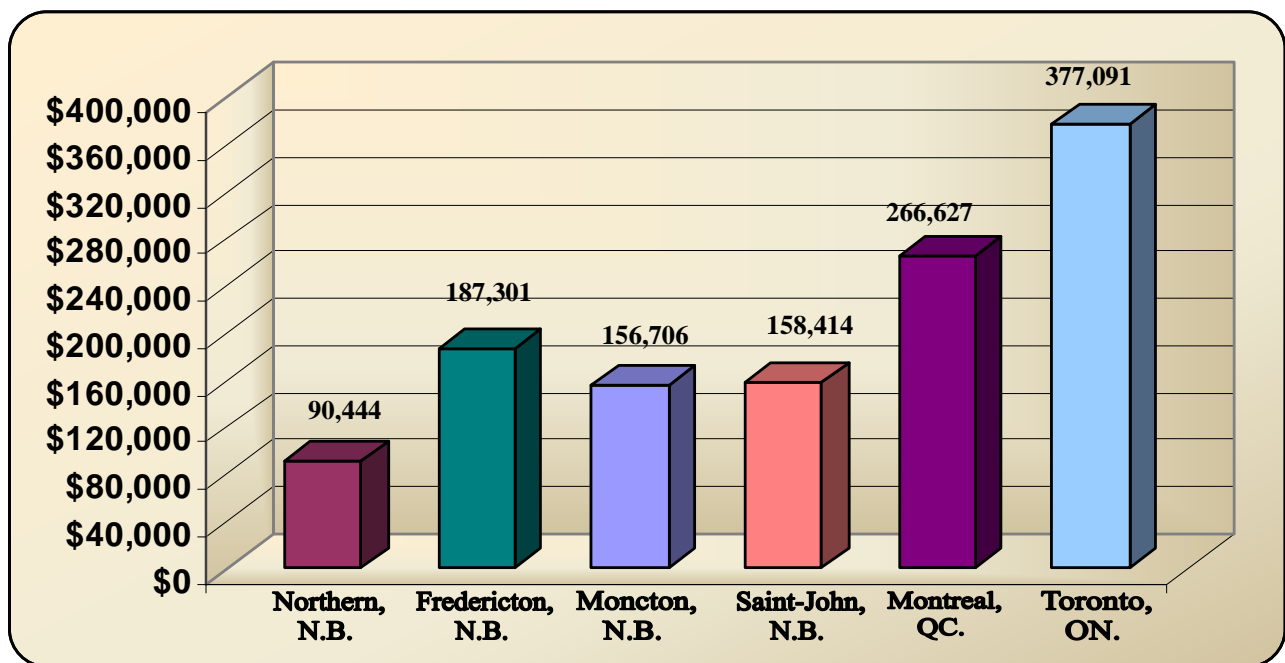
## AFFORDABLE HOUSING IN RESTIGOUCHE !

From calm residential areas to apartments equipped with good services, an enchanting site on the Restigouche River or on the Bay of Chaleur, Restigouche can surely meet all your expectations.

Buying a house in Restigouche county is very affordable. The **average cost of a house in Northern, NB is approximately \$88,001**. Prices are among the lowest in Atlantic Canada. You can search the Multiple Listing Service at [www.mls.ca](http://www.mls.ca) to shop for available properties.

**NOTE:** During the 2006 census, the average individual earnings in Restigouche were \$18,212 while the median family income was \$46,162.

*Average cost of a house in 2009*



Source: Canada Mortgage and Housing Corporation, 2009

Average rent of apartments (by month) 2 bedrooms	
Restigouche	\$ 533
Fredericton	\$ 710
Moncton	\$ 682
Saint-John	\$ 644

Source: Canada Mortgage and Housing Corporation, Avril 2010

PROPERTY TAX RATES		
Municipality	Residential	Non-residential
Atholville	1.2882	1.8552
Balmoral	1.4291	2.1437
Campbellton	1.7504	2.6256
Charlo	1.3956	2.0934
Dalhousie	1.6418	2.4627
Eel River Crossing	1.3100	1.9200
Kedgwick	1.4867	2.2301
Saint-Quentin	1.3300	1.9950
Tide Head	1.3900	2.0850
<b>Average</b>	<b>1.4468</b>	<b>2.1567</b>
<b>Provincial Rate</b>	<b>1.4573</b>	<b>2.1860</b>

Source: Service Canada –Evaluation, 2011

## THE SERVICES

The New Brunswick Electrical Power Commission provides electricity to the Restigouche region. NB Power offers an abundant and affordable supply derived from six sources: oil, coal, uranium, orimulsion, water and diesel. Residential and commercial rates are amongst the lowest in Atlantic Canada.

NB Power operates two thermal plants in Restigouche. The Dalhousie Generating Station, with an output capacity of 300 megawatts, was the first station in the world to undergo conversion to burn Orimulsion, a thick oil and water emulsion. The Belledune Generating Station, a coal powered plant has an output capacity of 450 megawatts.

Fuel oil as well as propane gas is available for residential and commercial use in bulk or retail format. Natural gas is as of yet unavailable.

All incorporated municipalities offer household and commercial water and sewer services. Our geographical location provides drinkable water imbued with both quality and quantity. Prices vary from one municipality to another but remain competitive and are often lower than other New Brunswick communities.

### Financial services

Restigouche county has an adequate network of financial institutions: 9 chartered bank branches and 11 credit unions.

Institutions offering credit services and placement options can also be found within the region.

### Professional Services

Many professional services are offered in the region, amongst which:

- Insurance agencies
- Architects
- Surveyors
- Accountants
- Consultants
- Real estate brokers
- Lawyers
- Estheticians and Hair dressers
- Mechanics

### MONTHLY ELECTRIC RATES \*

	URBAN	RURAL & SEASONAL
<b>Residential Service</b>		
Service charge	\$19.73	\$21.63
Energy Charge		
All kilowatt hours	9.85¢ / kWh	9.85¢ / kWh
<b>General Service I</b>		
Service charge		\$20.93
First 20kW of demand		No charge
Additional kW of demand		\$9.66 / kW
First 5 000 kWh		12.07¢ / kWh
Balance kWh		8.56¢ / kWh
<b>General Service II</b>		
Service charge		\$20.93
First 20 kW of demand		No charge
Additional kW:	The lesser of \$5.93 / kW or 2.965¢ / kWh	
first 5 000 kWh		12.07¢ / kWh
Balance kWh		9.21¢ / kWh
<b>Small Industrial Service</b>		Maximum charge 750 kW
Demand charge		\$6.33 / kW
First 100 kWh per kW		12.26¢ / kWh
Balance kWh		5.76¢ / kWh
<b>Other Services</b>		
Service call and reconnection fee		\$42.93
New customer connection charge		\$75.98
Reconnection charge for seasonals		\$119.81
An after hours fee is charged in addition to the above charges for service calls requested outside normal working hours.		
* Plus harmonized sales tax		

Source: NB Power, June 2010

## ASSURED QUALITY OF LIFE IN RESTIGOUCHE !

Restigouche is well served and health care in the area includes: public health services, medical specialists, general practitioners, dentists and optometrists.

### Hospitals

The regional hospital corporation includes:

- **Campbellton Regional Hospital** houses “state of the art” equipment and sophisticated technology. Operating in both official languages, the hospital offers 166 beds and a team of professionals dedicated to offering a wide array of medical services.
- **St. Joseph Community Health Centre** in Dalhousie serves the Eastern portion of the county. The team of professionals offer efficient Basic Services: General Services, Wellness Programs, Diagnostic, Ambulatory Care and Ambulatory Rehabilitation.
- **Hôtel Dieu St-Joseph** of Saint-Quentin serves the Western portion of the county. Specialists make regular visits and offer a variety of regular services. Six beds are available to the population.

**The Restigouche Hospital Center**, based in Campbellton, offers tertiary psychiatric services as well as psychiatric and psycholegal evaluations. The RHC offers services to the Province in both official languages.

### Other Health Care

The Department of Social Development maintains three offices in the region, in Kedgwick, Campbellton and Belledune (Jacquet River), where they offer various services.

Ambulance services established in Campbellton, Dalhousie, Saint-Quentin and Belledune assure adequate transportation service in case of emergency.

Restigouche county has three recognized **nursing homes for seniors** that offer 24 hour nursing care. Also, many other residential services are offered throughout the region.

### Police protection

Restigouche county is under the care of the Royal Canadian Mounted (RCMP) and has five detachments in the region.

In case of emergency, 9-1-1 services are also available throughout the region.

### Fire protection

All incorporated municipalities in the county and a few rural areas have their own fire protection services.

## ... RESTIGOUCHE IS THE GREAT OUTDOORS !

Surrounded by the natural beauty of the Appalachian Mountains, Restigouche County is known for the warmth of its people as well as the many outdoor and cultural activities the region has to offer.



### Great Fun All Year-round

The area is world-renowned for salmon fishing on the majestic Restigouche River, but it also offers a multitude of other recreational activities year-round. In the summer, you can hike the highest peak in the Maritimes or let your canoe glide on the many pristine rivers and lakes. Whether it's a day on the beach in Charlo or exploring the region's two magnificent provincial parks, Mount Carleton and Sugarloaf, the scenery is sure to take your breath away.

In 2003, Restigouche hosted Canada's most important multi-sport event, the Canada Winter Games. Not surprising since the average snowfall for Restigouche is 400 cm per year. Go snowmobiling on "White Gold" along hundreds of miles of expertly-groomed trails, breathe in the fresh air while alpine or cross-country skiing, try ice fishing or spending the night with friends by the fireside. Indoors and out, Restigouche offers world-class winter fun.

"Restigouche has the perfect mix of natural beauty and urban amenities."  
Jimmy Abud, owner of the Best Western Hotel in Dalhousie

### Rich Cultural Mix

The unique culture of Restigouche comes from a rich mix of Acadians, Scottish, English, Irish, and Mi'gmaq. The region also boasts major cultural attractions including the Miguasha Fossil Park that is classified among UNESCO's World Heritage Sites, and the Battle of the Restigouche National Historic Site of Canada. Pride in its cultural diversity is highlighted at various museums and art galleries. There are also many festivals that allow visitors and residents to celebrate the "joie de vivre" of Restigouche.



### Strong Vibrant Communities

Restigouche County is made up of many charming small villages and towns, as well as three urban centres – Campbellton, Dalhousie and Saint-Quentin. The area offers a variety of services and amenities without losing that special hometown charm. Supporting a healthy active lifestyle, two sports complexes provide many athletic facilities including semi-Olympic-size and family-oriented swimming pools, two Olympic-size skating rinks, squash courts and fitness rooms.

Throughout the Restigouche region, housing prices are very competitive and offer breathtaking views. The area also boasts an excellent education system and is home to the Campbellton Campus of the New Brunswick Community College.

## . . . RESTIGOUCHE IS THE GREAT OUTDOORS !

Two provincial parks complement the region and add to the enjoyment of visitors and locals alike.

The **Mount Carleton provincial park** situated in the highlands of New Brunswick's north occupies an area of 17,022 hectares. Mount Carleton itself towers 820 meters above sea level and is the highest peak in the Maritimes. Rivers, streams, lakes and valleys favor recreational activities that have minimal effects on the environment. The park enjoys a remarkable amount of biodiversity. This region is home to many species of animals. It is also possible to admire rare species of plants as well as various species of birds, go canoeing, kayaking, fishing, snowmobiling, hiking, enjoy the beach, geocaching and more! The installations and commodities include a reception area, a campground and walking trails.



The **Sugarloaf provincial park** is situated in the northern part of the Appalachian mountain range and encompasses an area of 1,142 hectares. Sugarloaf Mountain, with an altitude of 304.8 meters (1000 ft), serves as a beacon and emblem for the park; it also offers a breathtaking view of the City of Campbellton, the Restigouche River, the Bay of Chaleur and the Gaspé Peninsula. This four season Park has alpine skiing facilities as well as cross-country skiing, snowmobiling, walking, snowshoeing and bicycling trails. Services offered in winter include skating rink, ski school, cafeteria and bar. In summer, services include picnic areas, tennis courts, mountain bike trails (with access to the chairlift), campground (with 3 Yurts), paddle boats, geocaching and rental of ski lodge for receptions.

Among other important recreational installations in Restigouche one must mention the **Inch Arran Park** in Dalhousie. It includes a 5 star camping area with sandy beaches, tennis courts, a playground, a refreshment area, a souvenir shop and a day adventure kiosk with kayak rentals available.

On the Bay of Chaleur in Charlo, the **Blue Heron Camping** offers 140 camping sites and an outdoor pool. Close by, lies **Heron's Nest**, 20 fantastic cottages available year round. The beach is situated on the second largest sandbar in the world with salt water on one side and fresh water on the other.

Also of interest are two recreational centers, which offer the possibility of enjoying many sport-related activities under one roof: the **Recreaplex** in Dalhousie and the **Memorial Civic Center** in Campbellton. These two centers offer services that more than meet the needs of hockey, swimming (indoor pools), running and body building enthusiasts.

We also have a regional **marina in Dalhousie** that can accommodate up to 66 recreational vessels.

Let yourself be seduced by the colors of Restigouche.

Neighboring the province of Quebec along New Brunswick's northern border, the Restigouche region is the doorway to the Atlantic Provinces.

This magnificent area offers access to the sea, to the forest, to rivers, to the beauties of the Appalachian landscape, and to a welcoming and culturally rich population.

For more information, please visit the website <http://www.destinationrestigouche.ca>



## RESTIGOUCHE – A 4 SEASON DESTINATION !

Restigouche County enjoys a moderate continental climate. The influence of the important water mass known as the Bay of Chaleur provides relatively balanced precipitation throughout the year. With an annual total of 710 mm of rain and 383 cm of snow, a rich scenery full of contrasts and unrivalled natural beauty make Restigouche a paradise for outdoor recreation, regardless the season. Temperatures oscillate between 24° C in July and -17° C in January<sup>1</sup>.

### WINTER

In **winter**, Restigouche is bejewelled with “white gold” which covers most everything and becomes a true treasure chest for all outdoor enthusiasts. Whether within established bounds or in full-fledged nature, sports such as skiing, both alpine and cross country, snowboarding, snowshoeing and snowmobiling are all within reach.



Ice fishing on the Restigouche River or on one of the region’s lakes is also very popular. Another prized activity that rolls around at the end of this season is the harvesting of maple

syrup, which is processed on site into a variety of palatable delights.

### SPRING

Shortly after the maple sap has stopped flowing, nature offers a remarkable spectacle marked by the coming of **spring**. As the earth slowly sheds its milky innocence, the flora and fauna progressively begin their triumphant return. And what better activity than walking in the wild to witness this glorious rebirth.

Avid fishermen can even enjoy their favorite pass time on the many lakes and rivers. The Restigouche River is internationally renowned for its superb salmon fishing.



### SUMMER

The warm rays of **summer** bring with them the promise of countless outdoor activities. Besides fishing, which by now is in full swing, the waters will also draw in fans of swimming, canoeing, kayaking, scuba diving, wind surfing as well as outings on the water.

It is also the perfect season for excursions through the forest, camping, biking and also sports such as golf and tennis.



A very popular activity is the annual Restigouche River Run in canoes.

### AUTUMN

The many wooded areas throughout the region take on splendid colors to announce the coming of **autumn**. This is the most impressive of seasons where colors and shades intertwine into true ocular delights.

Before the temperature cools down, most outdoor activities can still be enjoyed. The changing colors and light winds result in truly memorable experiences.

Recreational hunting of both small and large game is also a popular activity that thrives throughout this season.



<sup>1</sup> Source: Environmental Atmospheric Services, 1966 to 1990

## SERVING ENTREPRENEURS !

If you have a business idea, **Enterprise Restigouche** is your first stop for business advice on developing your idea. Its main role is to act as a liaison between the business community and the various government agencies devoted to economic development.

Enterprise Restigouche's staff can inform you on government programs that are best suited for your business needs. They can also listen and provide guidance for the preparation of your business plan as well as assist you in preparing your application for financial assistance.

With the aim of stimulating Restigouche's economy, Enterprise Restigouche also organizes activities to encourage the exchange of ideas and information between economic interveners. They also produce various documents that can be most helpful to entrepreneurs.

**Enterprise Restigouche's services are free of charge, confidential and are offered in both official languages.**

### *Enterprise Restigouche*



#### **Examples of agencies & programs include:**

At the Federal level, the **Atlantic Canada Opportunities Agency (ACOA)** provides personalized business guidance and financial support to entrepreneurs with innovative ideas seeking to increase competitiveness, expand sales, introduce new products or develop new businesses.

**Service Canada** provides businesses with services such as: Job Bank for Employers and information on Human Resources Planning; Employment Insurance (EI) Information for Employers, record of Employment on the Web (ROE Web), Automated Earnings Reporting System (AERS), Report on Hirings, Work Sharing, Employment Insurance Premium Reduction Program, Supplemental Unemployment Benefit Program; Canadian Company Capabilities, a database to help find Canadian suppliers and increase the visibility of companies to government and private sector procurement professionals. Additional information can be found on the following site: <http://www.hrmanagement.gc.ca/gol/hrmanagement/site.nsf/en/index.html>

At the Provincial level, **Business New Brunswick** also provides technical and financial assistance for the development of good business ideas. The department offers several programs with respect to small business diversification/expansion, marketing/export development and quality management. The department's programs are geared for manufacturers, processors, selected services firms and tourism operators.

**The Department of Post-Secondary Education, Training and Labour** can provide several possibilities for financial assistance in respect to incremental job creation and training.

The **Regional Development Corporation**, a provincial Crown Corporation, manages the Northern NB Development Fund. As part of a special economic development initiative to stimulate economic development and job creation in the area.

In Restigouche, other economic organizations have an important role to play in the support of economic development.

The **Restigouche CBDC** is a federally funded customized lender to small businesses located within the boundaries of Restigouche County. They are also responsible for the delivery of the Provincial Entrepreneur Program, the Self-Employment Benefit (SEB) Program and the Young Entrepreneurs ConneXion Program and may also assist businesses with general business advice. Restigouche CBDC also offers a post-secondary job placement service which consists of identifying and recruiting jobs for post-secondary graduates in the County. This job matching service aims to match sustainable job opportunities offered by Restigouche employers with the appropriate post-secondary graduate.

The Restigouche Entrepreneurship Centre, operating under the name **Open for Business'** (OFB) main focus is entre-preneurship awareness. The entrepreneurship centre work mostly with young adults, but also with aspiring entrepreneurs, local businesses and teachers in order to develop a better entrepreneurial culture in our community.

The **Business Development Bank of Canada**, a crown corporation, exists to promote and assist small and medium sized businesses. In addition to loans they also offer management consultation services.

## A CALL ... IT'S SO SIMPLE !

	TELEPHONE	FAX	WEB SITES
<b>ENTERPRISE RESTIGOUCHE</b>	<b>789-4939</b>	<b>789-4933</b>	..... <a href="http://www.restigouche.ca">www.restigouche.ca</a>
<b>Municipalities &amp; First Nation</b>			
Atholville .....	789-2944	789-2925	..... <a href="http://www.atholville.net">www.atholville.net</a>
Balmoral.....	826-6060	826-6037	..... <a href="http://www.balmoralnb.com">www.balmoralnb.com</a>
Belledune .....	522-3700	522-3704	..... <a href="http://www.belledune.com">www.belledune.com</a>
Campbellton.....	789-2700	759-7403	..... <a href="http://www.campbellton.org">www.campbellton.org</a>
Charlo .....	684-7850	684-7855	..... <a href="http://www.villagecharlo.com">www.villagecharlo.com</a>
Dalhousie .....	684-7600	684-7613	..... <a href="http://www.dalhousienb.com">www.dalhousienb.com</a>
Eel River Bar First Nation .....	684-6277	684-6283	
Eel River Crossing .....	826-6080	826-6088	..... <a href="http://www.ercvillage.com">www.ercvillage.com</a>
Kedgewick.....	284-2160	284-2859	
Saint-Quentin.....	235-2425	235-1952	..... <a href="http://www.saintquentin.nb.ca">www.saintquentin.nb.ca</a>
Tide Head.....	789-6550	789-6553	..... <a href="http://www.tidehead.ca">www.tidehead.ca</a>
Aliant .....	789-4069	753-6845	..... <a href="http://www.aliantelecom.ca">www.aliantelecom.ca</a>
CCNB-Campbellton.....	789-2377	789-2433	..... <a href="http://campbellton.ccnb.nb.ca">http://campbellton.ccnb.nb.ca</a>
Charlo Regional Airport Authority .....	684-5507	684-5509	..... <a href="http://www.charloairport.ca">www.charloairport.ca</a>
Dalhousie Marina.....	684-5298	684-7613	
Golf: Restigouche .....	789-0885	684-3443	..... <a href="http://www.restigouchegolf.com">www.restigouchegolf.com</a>
Saint-Quentin.....	235-2578	-----	
Hospitals: Campbellton Regional .....	789-5000	789-5025	..... <a href="http://www.santevitalitehealth.ca">www.santevitalitehealth.ca</a>
St. Joseph Community Health Centre.....	684-7000	684-4751	..... <a href="http://www.santevitalitehealth.ca">www.santevitalitehealth.ca</a>
Hôtel Dieu St-Joseph .....	235-2300	235-7201	..... <a href="http://www.santevitalitehealth.ca">www.santevitalitehealth.ca</a>
Inch Arran Park.....	684-7363	684-7613	
Memorial Civic Center .....	789-2888	789-2898	
Mount Carleton Park.....	235-6040	235-6044	
NB Power.....	684-3387	684-6122	..... <a href="http://www.nbpower.ca">www.nbpower.ca</a>
Open for Business .....	753-4570	753-4568	..... <a href="http://www.entrepreneurshipcentre.ca">www.entrepreneurshipcentre.ca</a>
Port of Dalhousie .....	684-3346	684-3388	..... <a href="http://www.portdedalhousie.com">www.portdedalhousie.com</a>
RCMP – County detachment .....	789-6000	753-3024	..... <a href="http://www.rcmp-grc.gc.ca">www.rcmp-grc.gc.ca</a>
Recreaplex of Dalhousie.....	684-7353	684-7356	
Restigouche CBDC.....	753-3344	753-7131	..... <a href="http://www.restigouchecbdca.ca">www.restigouchecbdca.ca</a>
Restigouche Gallery.....	753-5750	759-9601	..... <a href="http://www.grg.nb.ca">www.grg.nb.ca</a>
Restigouche Hospital Center.....	789-7000	789-7065	..... <a href="http://www.santerestigouchehealth.com">www.santerestigouchehealth.com</a>
Restigouche Regional Museum .....	684-7490	684-7613	
Restigouche Tourism Association .....	789-6522	-----	..... <a href="http://www.destinationrestigouche.ca">www.destinationrestigouche.ca</a>
Sugarloaf Provincial Park .....	789-2366	789-2099	
Via Rail.....	1-800-561-3952	-----	..... <a href="http://www.viarail.ca">www.viarail.ca</a>
Woodworking Center of Excellence....	789-2088	789-4836	..... <a href="http://campbellton.ccnb.nb.ca">http://campbellton.ccnb.nb.ca</a>